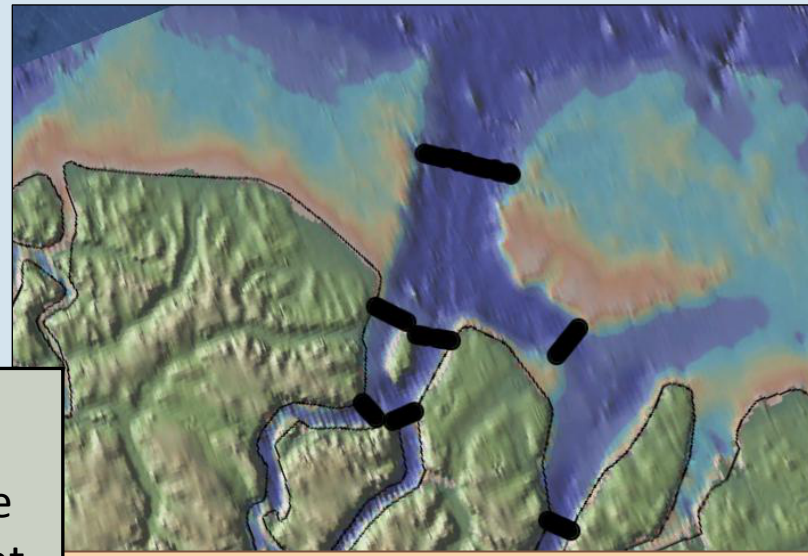


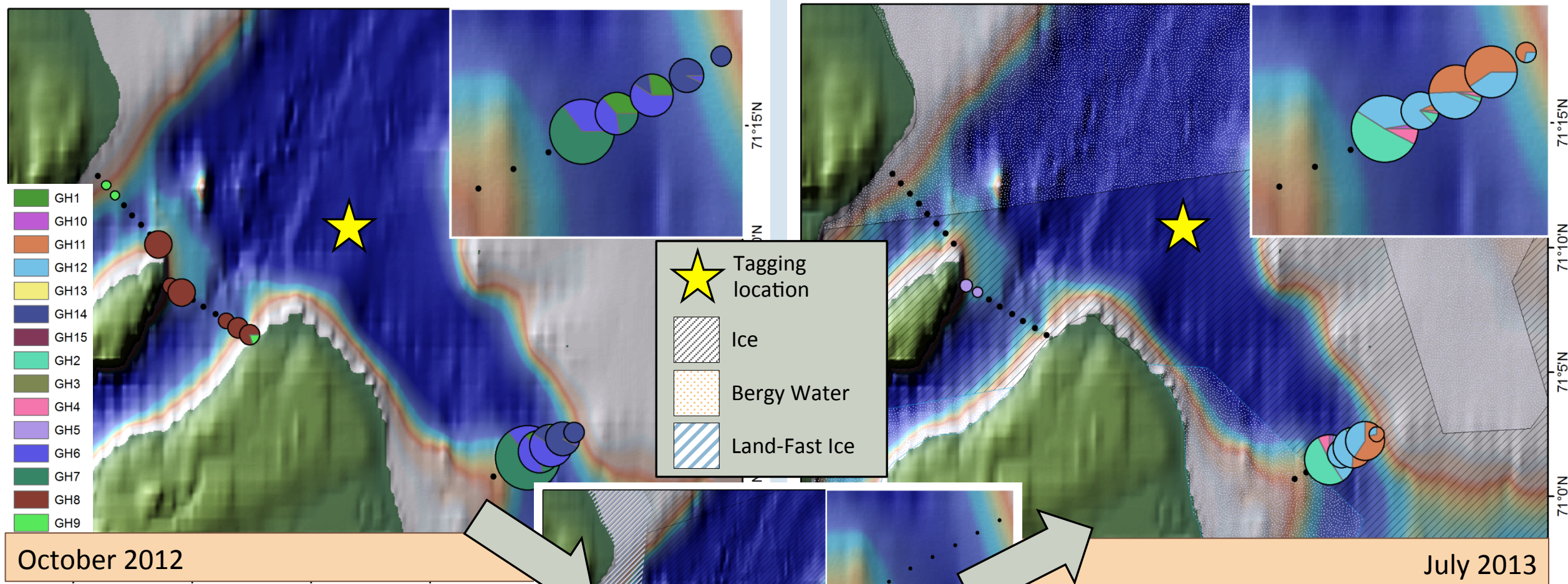
2012 Array for Scott Inlet & Sam Fjord



2013 Array

In 2012 a preliminary acoustic array was set in Scott Inlet and Sam Fjord to determine the seasonal presence of Greenland halibut. More receivers were then set out in 2013 to answer future questions of site fidelity and movement patterns within this system.

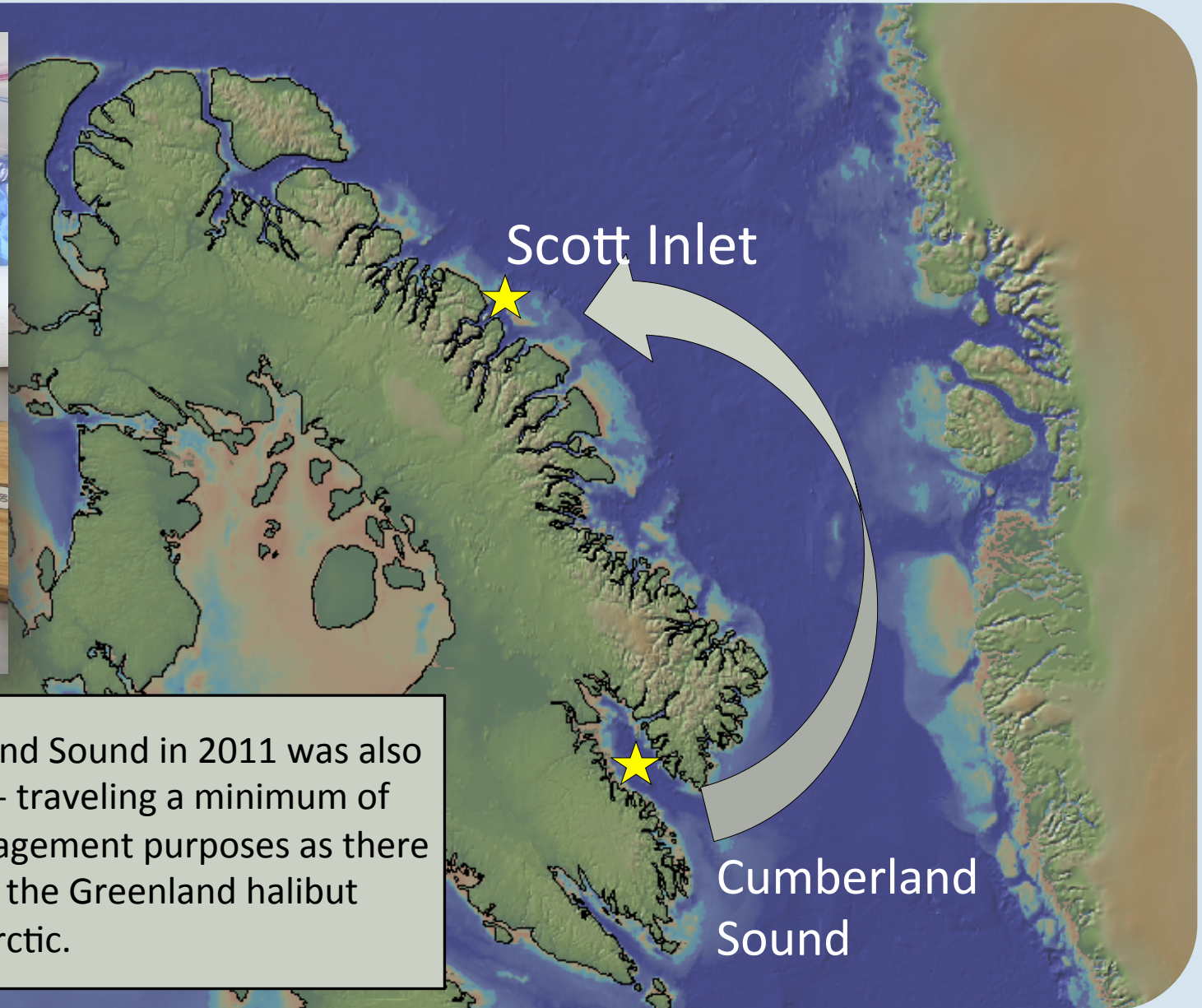




There were very few detections from the end of November 2012 to January 2013, possibly indicating a seasonal migration of this species.

When the ice starts to break up, more individual fish are detected. The vast majority of fish are detected on receivers that are moored at a depth >200 m.





One Greenland halibut that was tagged in Cumberland Sound in 2011 was also detected multiple times on receivers in Scott Inlet- traveling a minimum of 1,000 km to get there. This has implications for management purposes as there is clearly a certain level of connectivity between the Greenland halibut populations throughout the Arctic.